

STEFANIE TROW

Walk With You



After Samuel, 2022

Ink, Acrylic & Collage on Panel, 20cm x 15cm

STEFANIE TROW

Walk With You



Warrington Museum & Art Gallery
wmag.culturewarrington.org



Introduction by Lucy Wright

Walk With You is a collection of paintings, created in the Warrington area, by the artist Stefanie Trow, who lives in Manchester with her wife and children.

This exhibition of works predominantly on paper represents something of a departure for Trow, incorporating collage and found objects to create evocative, layered scenes whose subjects shift in and out of focus, like memories overlapping and coalescing. Many of the works have a timeless quality: warm, Kodachrome-tinted palettes conjure lazy summer afternoons and childhoods spent playing in the shade of benevolent trees, while others capture sodden skies and muddy footpaths, colours diluted but still springing with vitality.

Family is a key theme in the collection, as is place—and Trow is a prolific artist for whom life and practice are closely entwined. Indeed, one of the most striking features of this body of work—and something that coheres the pieces on display—is a quality of affect that speaks to unconditional love; love of family, love of landscape, love of work. This finds literal expression in the piece ‘Mummy, I love you’, in which the spontaneous inscription by the artist’s daughter on the underside of the collaged figure at some stage during the making process is incorporated into the final work, not only providing a title but also creating a hidden message seen only by the artist and her child.

In addition to the framed pieces on the walls, there are also drawings from Trow’s sketchbooks, testament to just some of the lived research that underpins the collection. Walking in nature, working in the studio, time at home watching Netflix or playing with the children all provide inspiration, with many of the works positioning the viewer in the role of the painter-parent, looking down fondly at the child at rest, or keeping a watchful eye on the raddling of a lake with an outstretched stick. Many of the scenes speak to outdoor domesticity—there are brightly-coloured anoraks with the hoods pulled up, oversized sunhats and hands cupped to cradle a tiny seedling. There are undeniably ‘familiar’

scenes, but no less radical for it, offering snapshots of life in a non-traditional family that also invite the viewer into a small moment of rest and grateful contemplation, in a world where late-stage capitalism has made this feel like a rare and unwarranted luxury.

Rendered with the same liveliness and grace, both people and landscape act in harmony in Trow's paintings. Here, nature is not merely the passive backdrop for human activity, but an active and loving agent in its own right, with its own quiet but powerful subjectivity. As nature writer Nan Shepherd described it, "substance and its essence now are one...We are love's body, or we are undone"¹.

In the final piece of the show, a yellow flower proffered like a votive to the spectator acts as an allegory for the exhibition itself, a gift selected not just for its beauty but as a gesture of heartfelt affection.

In *Walk With You*, Trow has offered us many small, beautiful gestures and an invitation through her paintings: walk with them, treasure them and allow them to nourish your days.

LUCY WRIGHT IS AN ARTIST BASED IN LEEDS AND A PRODUCER AT AXIS

1 Nan Shepherd, *In the Cairngorms* (Edinburgh: The Moray Press, 1934)





Lymm Dam, 2023

Mixed Media on Canvas, 184cm x 122cm



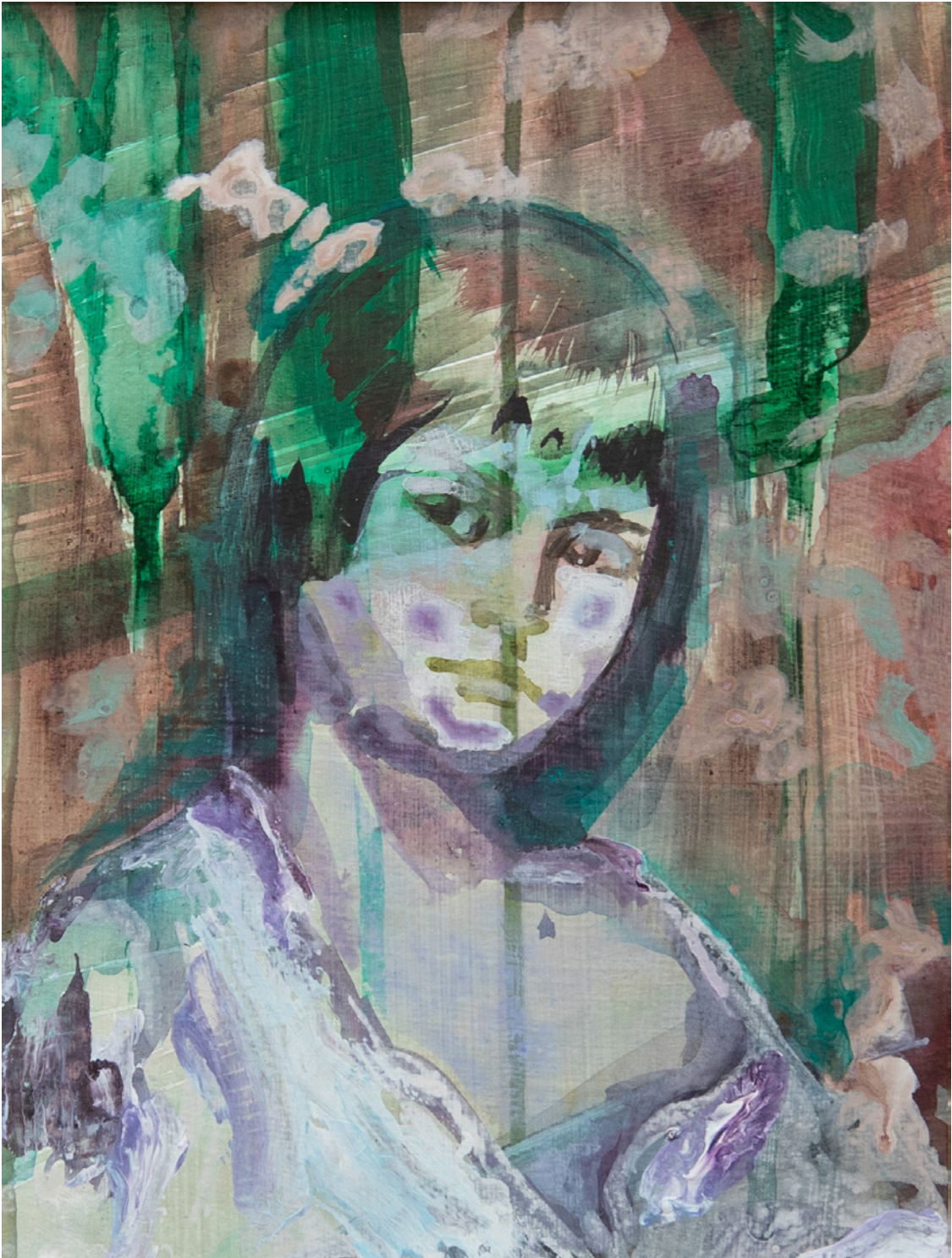
Sunflowers, 2022

Ink & Oil on Panel, 20cm x 15cm



Out to Sea, 2022

Ink, Acrylic & Collage on Panel, 20cm x 15cm



Alice, 2022

Ink, Acrylic & Collage Panel, 20cm x 15cm



Daffodil, 2022

Ink, Acrylic & Collage on Panel, 20cm x 15cm



Fire Flower, 2022

Ink, Acrylic & Collage on Panel, 20cm x 15cm



Offerings, 2022

Ink, Acrylic & Collage on Panel, 20cm x 15cm



Under the Tree, 2023

Ink & Collage on Paper
158cm x 84cm



Boy Balancing, 2023

Ink & Oil on Canvas, 122cm x 92cm



Pink Sea, 2022

Ink, Acrylic & Collage Panel, 20cm x 15cm



Stick Fishing, 2022

Ink, Acrylic & Collage on Panel, 20cm x 15cm



Mummy I Love You, 2022

Ink, Oil & Collage on Panel, 20cm x 15cm



Walk With You, 2023
Mixed Media on Canvas, 149cm x 99.5cm



Wildflowers, 2023

Ink & Oil on Canvas, 122cm x 92cm



Canal Path, 2023

Ink & Collage on Paper
149cm x 84cm



Before Dry Land, 2023

Ink & Oil on Canvas, 149cm x 200cm



Riverbank, 2022

Ink, Collage & Pastel on Paper, 42.5cm x 29.5cm



Side-line, 2022

Ink, Acrylic & Collage on Paper, 42.5cm x 30cm



Painter in the
Landscape, 2023

Ink, Acrylic, Pastel &
Collage on Paper, 159cm
x 87cm



Fence Jumping, 2022

Ink, Acrylic & Collage on Paper, 41.5cm x 29.5cm



Crossing, 2023

Ink on Yupo Paper, 32cm x 22cm



Holding a Flower, 2023

Ink on Paper, 21cm x 14.5cm



Flowers by the Bed, 2023

Ink on Paper, 21cm x 16.5cm



Waiting, 2023

Ink on Paper, 15.5cm x 21cm



Always With Us, 2023

Ink, Acrylic & Oil on Muslin Cloth, 40cm x 40cm



Four Sunflowers, 2023
Ink & Oil on Canvas, 95cm x 95cm

